

# **From pits of sand and clay to dynamic environments for nature, (water)recreation, tourism and culture**

**WCC Leipzig – Province of Antwerp –  
Igor Geubbelmans, director Recreational Domain  
Zilvermeer (Silverlake) & De Schorre**

# Compact of the presentation

Fact:

*Transforming historic industrial landscapes into dynamic environments*

*enhancing the wellbeing of nature, inhabitants and visitors, is a time and energy consuming process...*

*But definitely worth to do so!*

## 3 Core statements – keys to success

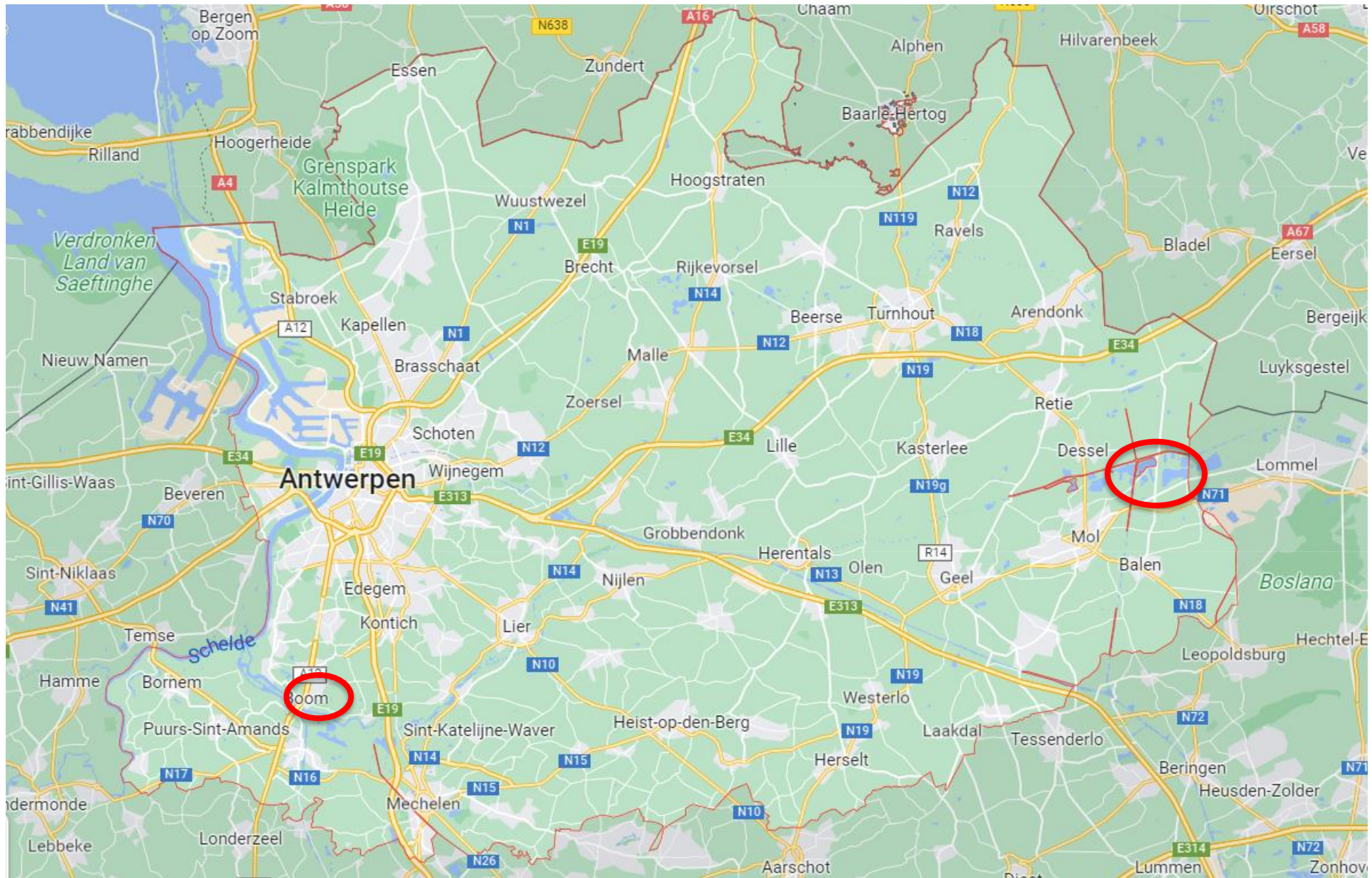
- **Fruitful partnerships** are a very important key to success
- **Quick wins** and **long term visions** create trust!
- Connecting to the history and the local community goes together with **plugging in into innovative development.**

# Two Regions in the Province of Antwerp





# Two Regions in the Province of Antwerp





# Two Regions in the Province of Antwerp

**Two geological formations** in Flanders are the origin of two industrial branches still continuing till today and form USP of both regions.

Clay pits of the Rupel area (Boom)



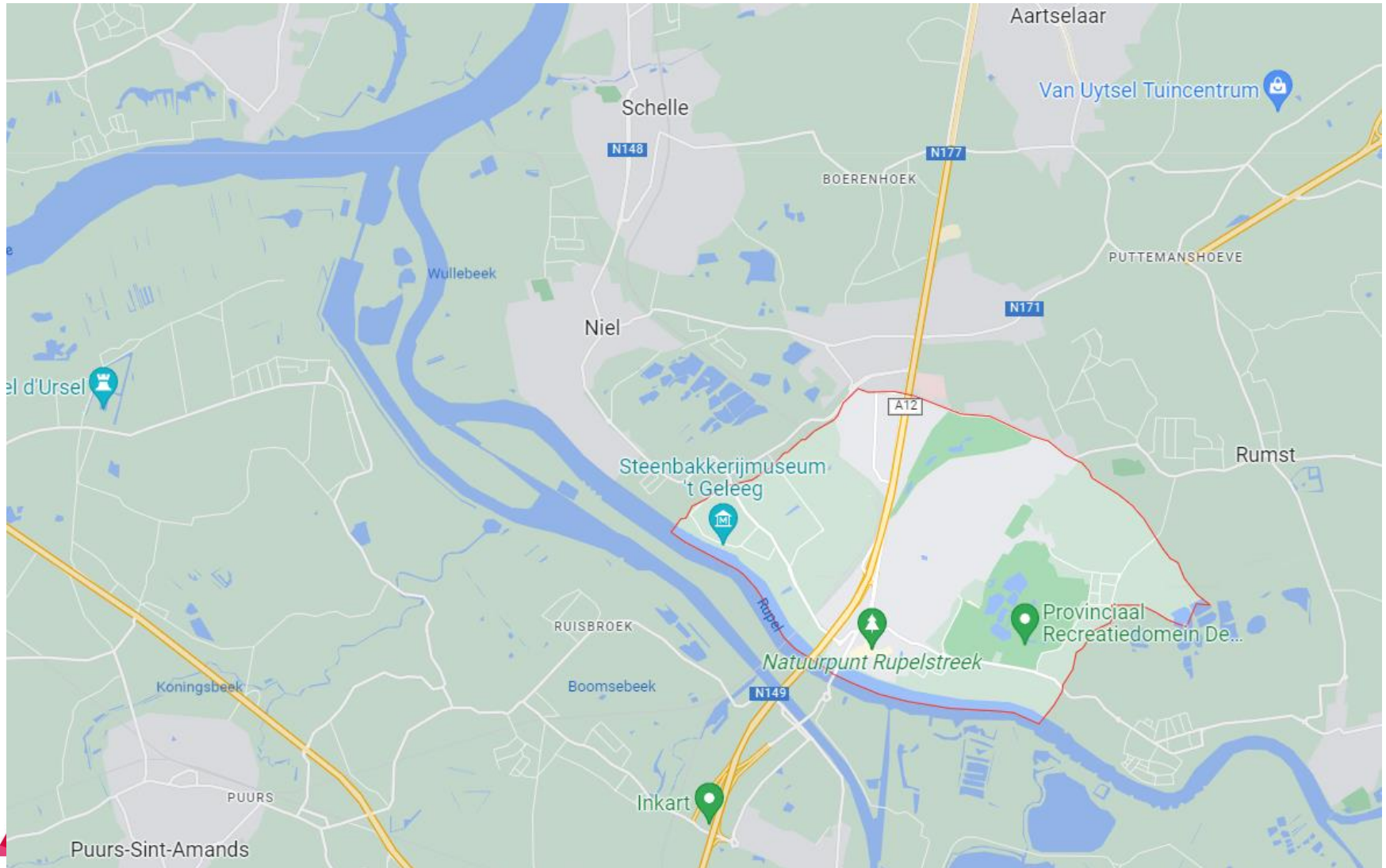
Sand pits of the Campine area (Mol)





# Geological formations: Pits of Clay

Rupel: Clay, water and landscape: 3 USP's



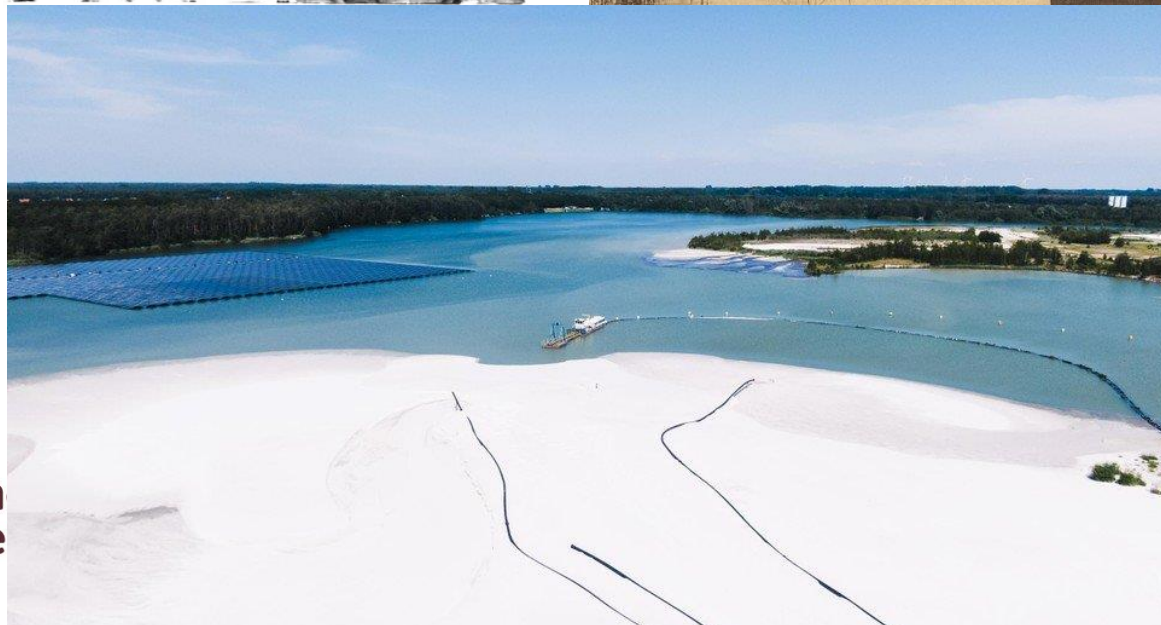
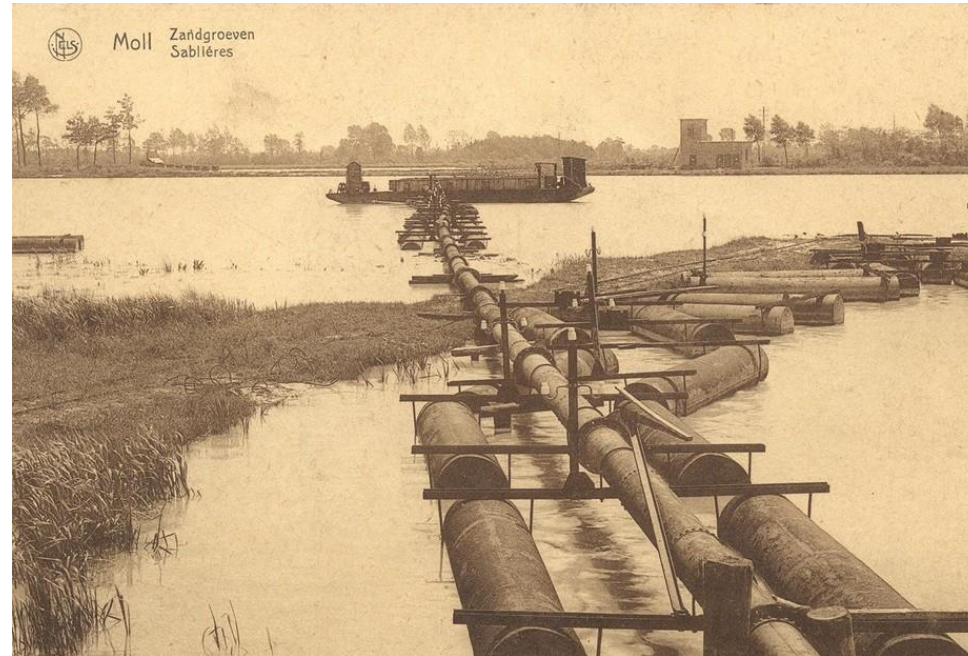
# Geological formations: Pits of Clay

Rupel: Clay, water and landscape: 3 USP's





# Geological formations: Pits of Sand





# Geological formations: Pits of Sand



**Campine Lakes: Sand, water and nature: 3 USP's**



# Keys to succes:

1. **Fruitful partnerships** are a very important key to success
2. **Quick wins** and **long term visions** create trust!
3. Connecting to the history and the local community goes together with **plugging in into innovative development.**



# 1. Fruitful partnerships

## Recreational Domain de Schorre (Boom)









# 1. Fruitful partnerships

## Recreational Domain Zilvermeer

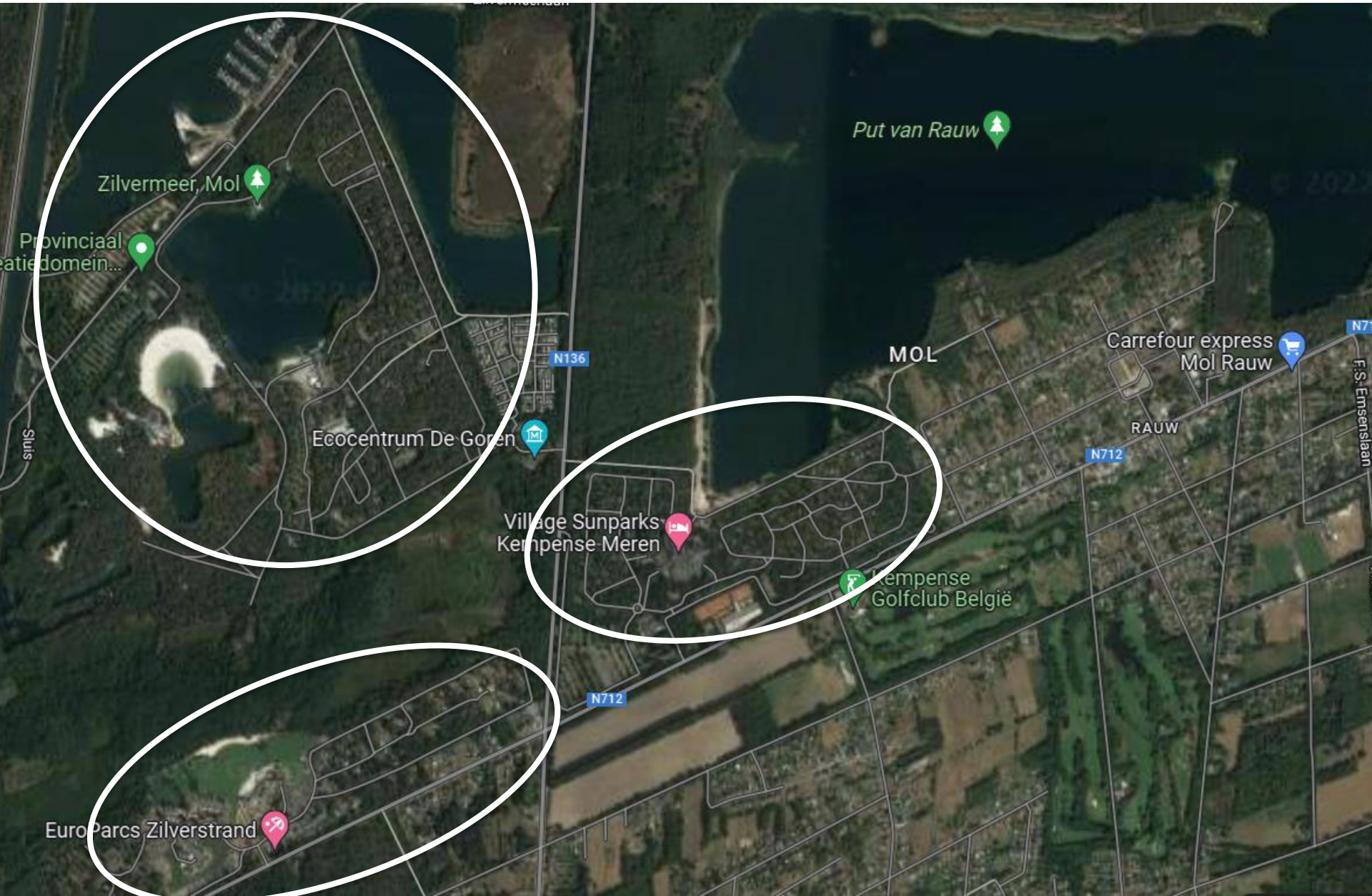








# 1. Fruitful partnerships



## 2. Creating trust... Quick wins and long term visions

- Creating trust = essential for start & further development of projects.
- How?
  - **Quick Wins:** Show that you mean it + offer something
  - **Long term visions:** set your goal!
- **Stay alert**
  - Repeated visits + new visitors in new context (90's: low budget holidays by plane)
  - Constant attention to upgrade of quality
  - Every year 'something new'



# 3. Plug in into innovative initiatives

## Recreational Domain de Schorre - History & Future

Infrastructural development and art projects:

- Historic machine hall transformed in supermodern congress center
- First domain to offer a Winter Festival (walk with culture and music in an amazing lighted nature decor)
- One World Bridge of artist Arne Quinze
- Famous trolls (troll forest) of Thomas Dambo
- Art staircase (in development)



# 3. Plug in into innovative initiatives

## Recreational Domain Zilvermeer

Future investments (climate change)

- Project ClimateLakes (partner ins VITO Research to use the lakes as extra water buffering)
- Renovation of the infrastructure: circular and passive building
- Floating islands of plants on our lakes (

Social tourism: core business

Initiatives for social and accessible tourism, through partnerships:

- accessible infrastructure everywhere!
- low budget camping lodges
- 2 accessible houses (2x 6p)
- Contract CrazyIdee: taxiboat for wheelchair (WheelWaver)





# Thanks

**PROVINCIE ANTWERPEN**  
**Leisure Department**

**[Igor.geubbelmans@silvermeer.be](mailto:Igor.geubbelmans@silvermeer.be)**

Provinciehuis,  
Koningin Elisabethlei 22, B- 2018 Antwerpen  
M 0475 33 02 22